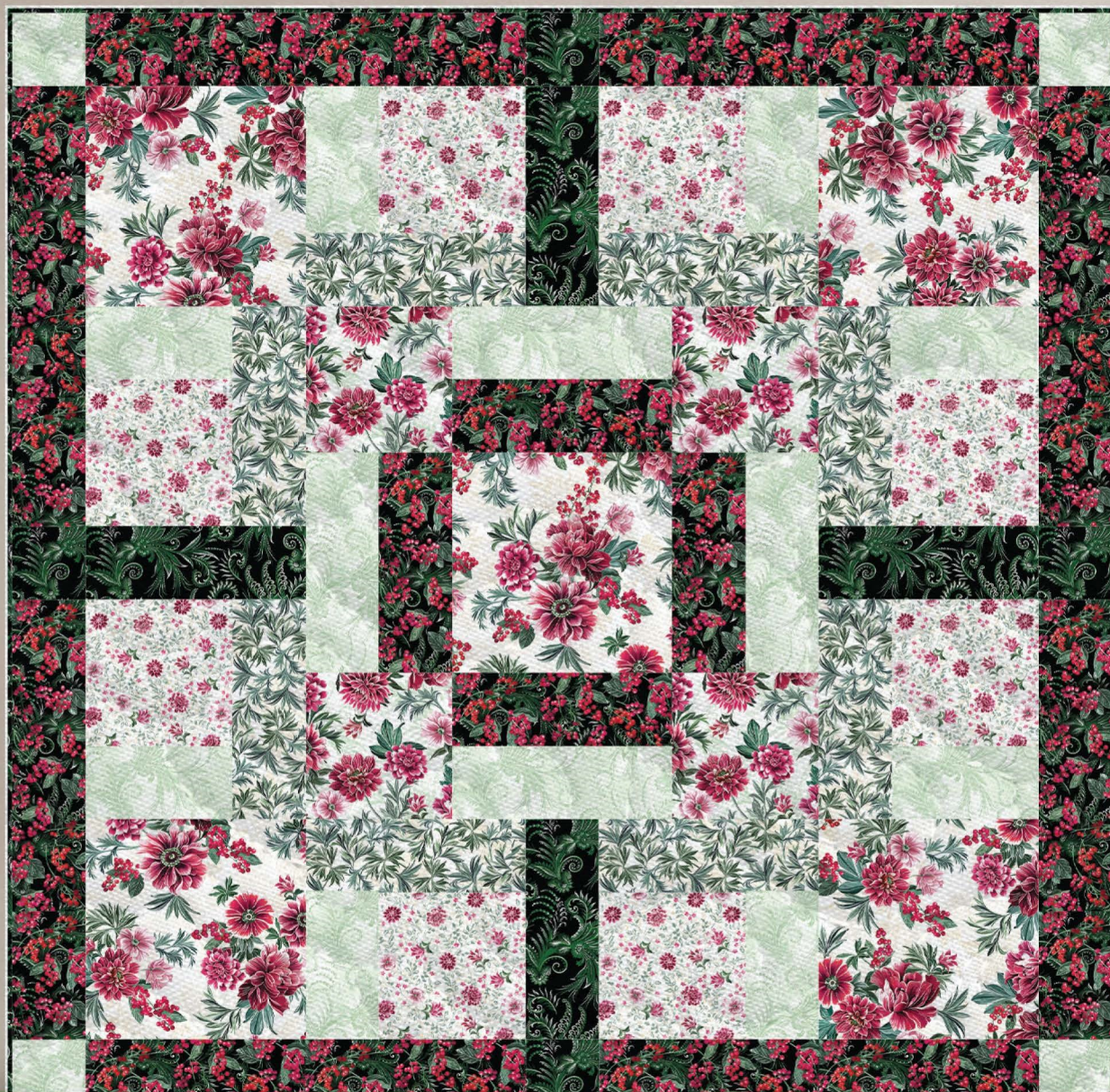


**Benartex** KANVAS

**WINTERBERRY FLORAL**  
Enhanced with Pearlescent

*free pattern*

*Cold Snap*









Free pattern designed by Stephanie Sheridan • Finished Size: 60" x 60" • Available May/June 2023 at [Benartex.com](https://www.Benartex.com)



## CUTTING INSTRUCTIONS

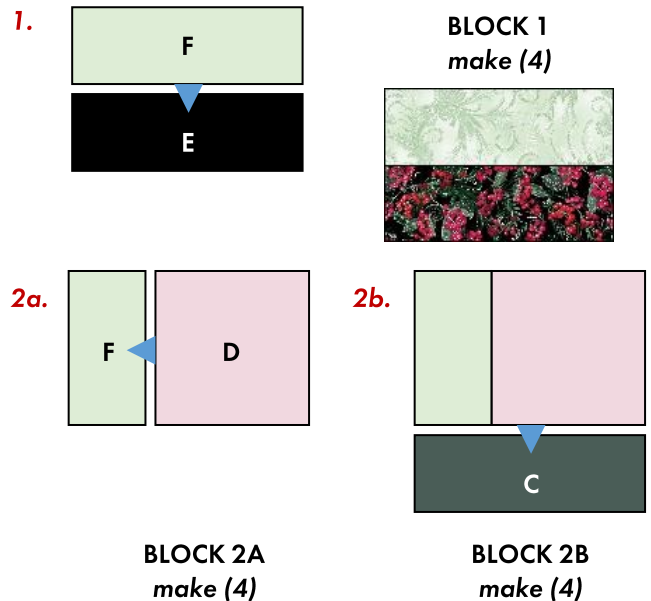
WOF = Width of fabric | LOF = Length of fabric | \*Sew strips via short ends, then subcut as indicated in pattern

	<b>WINTERBERRY BOUQUET</b> 14013P-07 Cream	1 YD	<i>Fussy Cut:</i> (5) 12-1/2" squares		<b>GLISTENING BERRIES</b> 14020P-12 Black	1-1/8 YDS	(2) 4-1/2" X WOF strips, subcut (4) 4-1/2" X 12-1/2" strips From remaining LOF cut: (8) 4-1/2" X 24-1/2" strips
	<b>WINTERBERRY GARDEN</b> 14015P-07 Cream	3/8 YD	(1) 8-1/2" X WOF strip, subcut (4) 8-1/2" squares		<b>WINTERBERRY SCROLL</b> 14021P-04 Sage	5/8 YD	(4) 4-1/2" X WOF strips, subcut (4) 4-1/2" X 12-1/2" strips, (8) 4-1/2" X 8-1/2" strips and (4) 4-1/2" squares
	<b>WINTERBERRY LEAVES</b> 14016P-07 Cream	1/2 YD	(3) 4-1/2" X WOF strips, subcut (8) 4-1/2" X 12-1/2" strips		<b>WINTERBERRY SCROLL</b> 14021P-40 Green	7/8 YD	(2) 4-1/2" X WOF strips, subcut (4) 4-1/2" X 12-1/2" strips and (4) 4-1/2" squares (7) 2-1/4" X WOF strips *, BINDING
	<b>WINTERBERRY BUDS</b> 14019P-07 Cream	5/8 YD	(2) 8-1/2" X WOF strips, subcut (8) 8-1/2" squares				

### BLOCK ASSEMBLY: *Refer to BLOCK DIAGRAMS*

- Sew (1) E 4-1/2" X 12-1/2" strip and (1) F 4-1/2" X 12-1/2" strip together to create **BLOCK 1**. Square to 8-1/2" X 12-1/2", make (4).
- Sew (1) F 4-1/2" X 8-1/2" strip to the left side of (1) D 8-1/2" square, then sew (1) C 4-1/2" X 12-1/2" strip to the bottom to create **BLOCK 2A**. Square to 12-1/2", make (4).
- Sew (1) F 4-1/2" X 8-1/2" strip to the right side of (1) D 8-1/2" square, then sew (1) C 4-1/2" X 12-1/2" strip to the bottom to create **BLOCK 2B**. Square to 12-1/2", make (4).

### BLOCK DIAGRAMS



### QUILT ASSEMBLY: *Refer to QUILT DIAGRAM*

- Sew (1) **BLOCK 1** to each side of (1) A 12-1/2" square.
- Sew (1) **B** 8-1/2" square to each side of remaining **BLOCK 1**s, then sew to top and bottom to create **QUILT CENTER**.

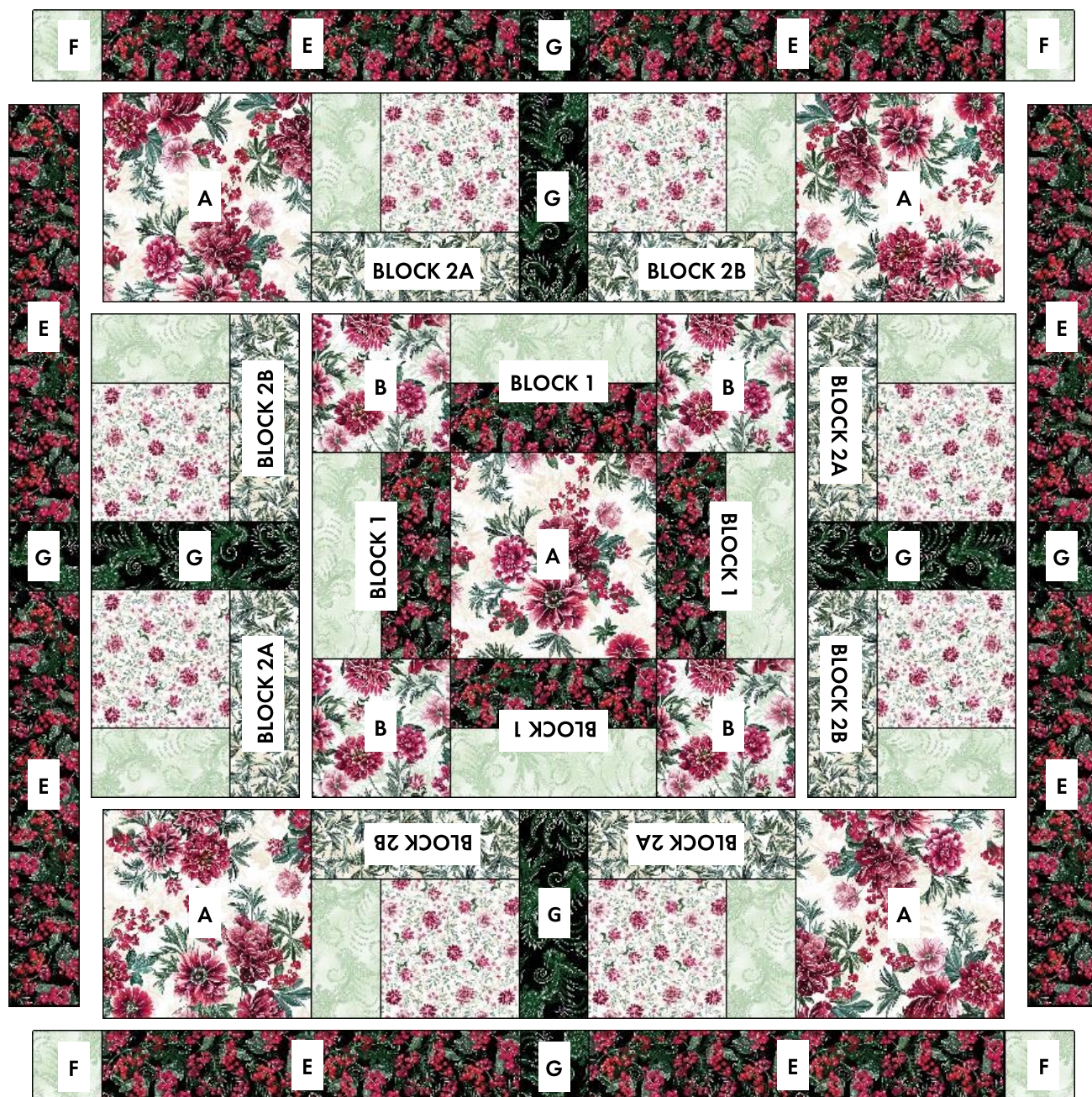
### BORDER ASSEMBLY: *Measure width and length of quilt top to ensure border cutting sizes. Below are our measurements.*

*Refer to QUILT DIAGRAM for proper placement and rotation.*

- Sew (1) **BLOCK 2A**, (1) G 4-1/2" X 12-1/2" strip and (1) **BLOCK 2B** together to create **BORDER 1 UNIT**, make (4).
- Sew (1) **BORDER 1 UNIT** to each side of the quilt.
- Sew (1) A 12-1/2" square to each side of the remaining **BORDER 1 UNITS**, then sew to the top and bottom of the quilt.
- Sew (1) G 4-1/2" square and (2) E LOF 4-1/2" X 24-1/2" strips together to create **BORDER 2 UNIT**, make (4).
- Sew (1) **BORDER 2 UNIT** to each side of quilt.
- Sew (1) F 4-1/2" square to each end of remaining **BORDER 2 UNITS**, then sew to top and bottom of the quilt.



**COLD SNAP  
QUILT DIAGRAM  
SIZE: 60" X 60"**



**FINISHING:**

Cut batting and backing 3" larger than top on all sides. Layer backing, batting and top together and baste or pin. When quilting is completed, trim excess batting and backing. Bind with G fabric.

*Note: If this Benartex pattern is included in a kit, any questions about the kit should be addressed to the vendor from whom you bought it.*

Share your finished quilt with the Benartex Community on social media by taggin #benartex\_fabrics



Also visit our Sewing Group on Facebook,  
**Create Inspire Delight**