

Benartex COMFORT FLANNEL
BABY DINO



Finished size: Burp Cloths 12" x 18", Bibs 10" x 14"
Designed by Brianna Roberts

CUTTING INSTRUCTIONS

WOF = Width of fabric

Additional Supplies Needed: 3/4" - 1" Hook and Loop Tape, Batting (if desired)

BIB

| | |
|--|---|
| | HAPPY DINOSAURS A 14467F-13 1 FQ (1) 12-1/2" x 1-1/2" rectangle Dark Grey |
| | DINO & DOTS B 14472F-56 1 FQ (1) 12-1/2" x 1-1/2" rectangle Navy |

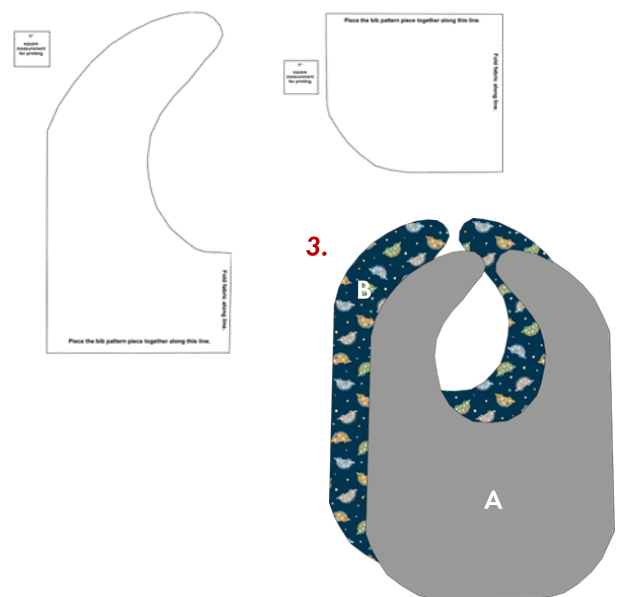
BURP CLOTH

| | |
|--|--|
| | BABY DINO WORDS C 14465F-09 1 FQ (1) 8-3/4" x 12-1/2" strip White |
| | LITTLE STRIPES D 14466F-08 1 FQ (1) 12-1/2" x 18-1/2" rectangle Grey |
| | HAPPY DINOSAURS E 14467F-80 1 FE (1) 4" x 12-1/2" strip Aqua |
| | LITTLE LANDSCAPE F 14470F-80 1 FE (1) 4" x 12-1/2" strip Aqua |
| | DINO GEO G 14471F-13 1 FE (1) 2-3/4" x 12-1/2" strip Dark Grey |

BIB ASSEMBLY: Refer to BIB DIAGRAMS

BIB DIAGRAMS

1. Print bib pattern pieces. Print, "Actual Size" or 100%. Check the measurement box for accuracy. Cut out the bib pattern piece. Piece it together along the lines indicated.
2. Fold A and B fabrics lengthwise. Put the pattern piece along the fold and cut (1) each.
Note: Can also cut (1) from batting if desired.
3. Place A and B bib pieces right sides together. If choosing to use batting, place it on top of the bib pieces, then pin or clip together.

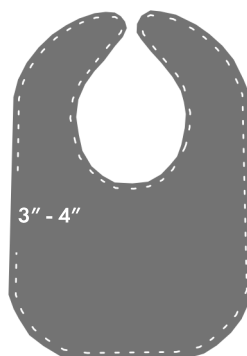


BIB ASSEMBLY (continued): Refer to BIB DIAGRAMS

5. Leaving a 3" to 4" gap along the side of the bib, sew a 1/4" seam allowance along the edge of the bib, then turn the bib right side out and press.
6. Sew the opening closed with a slip stitch or machine sew it closed using an 1/8" or less seam allowance. Topstitch with a 1/4" allowance along the edge of the bib. Quilt if desired.
7. Place the hook and loop tape at the top of the bib opening around the neck of the bib (one piece and on the front and one piece on the back).
8. Sew the hook and loop tape onto the bib to complete.

BIB DIAGRAMS

5.



7.



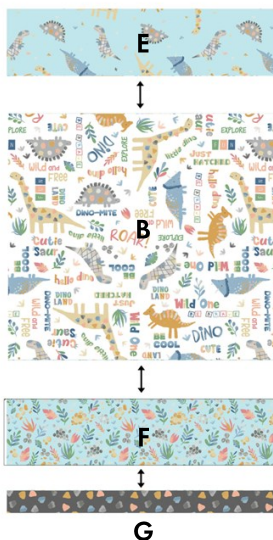
BURP CLOTH ASSEMBLY:

Refer to BURP CLOTH DIAGRAMS

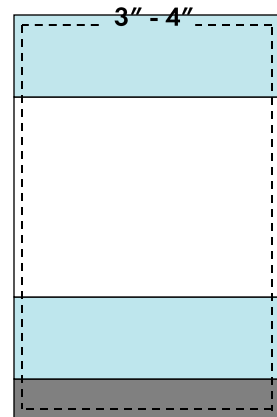
9. Sew C, E, F and G pieces together as shown to create front of burp cloth. Square to 12-1/2" x 18-1/2".
10. Place front of burp cloth right sides together with D 12-1/2" x 18-1/2" rectangle. If choosing to use the batting, place it on top of the burp cloth pieces. Pin or clip together.
11. Leaving a 3" to 4" gap along one side of the burp cloth, start to sew a 1/4" seam allowance along the edge of the burp cloth, then turn right side out and press it.
12. Sew the opening closed with a slip stitch or machine sew it closed using an 1/8" or less seam allowance. Topstitch with a 1/4" allowance along the edge of the burp cloth. Quilt if desired.

BURP CLOTH DIAGRAMS

9.



11.



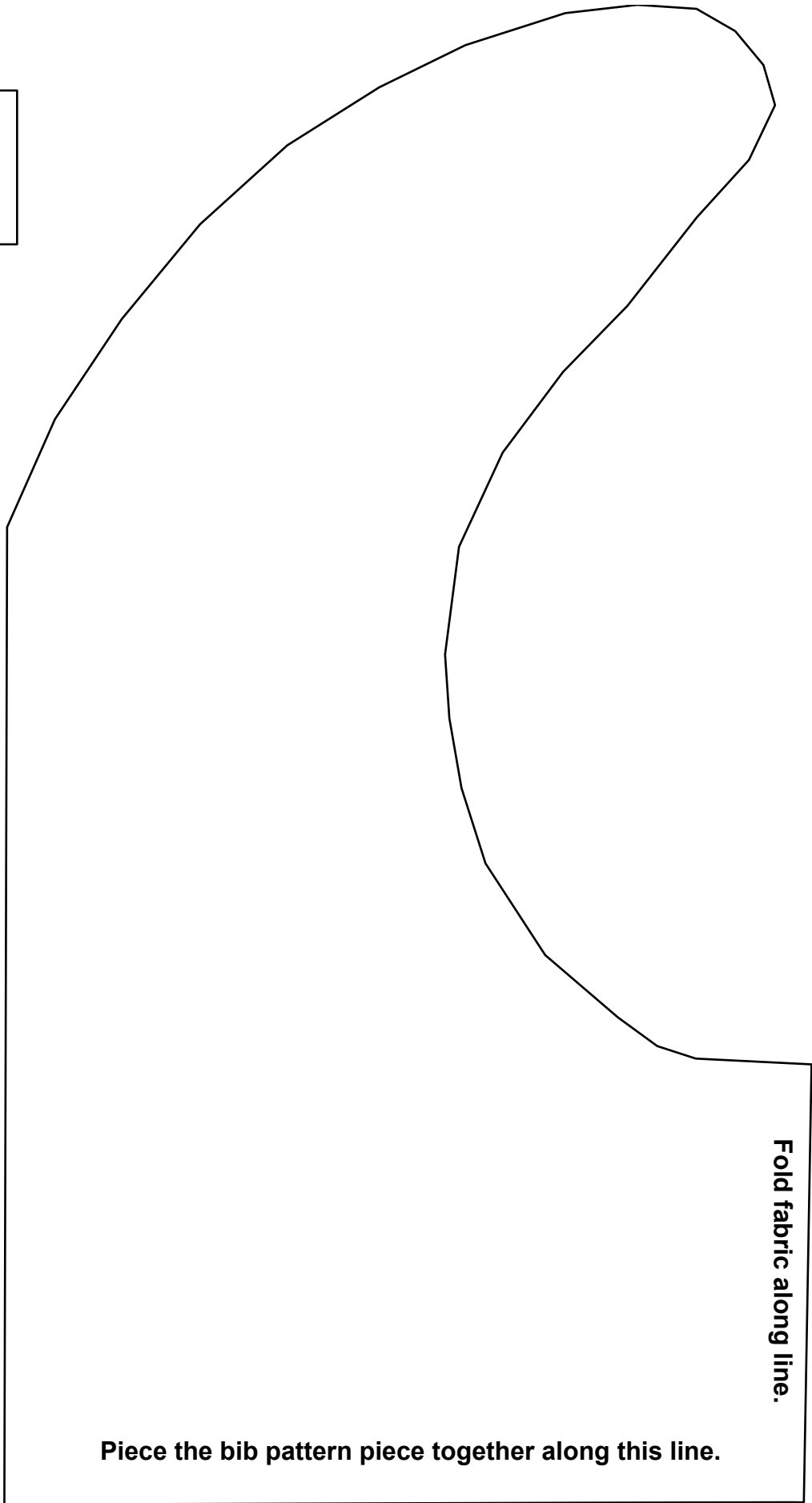
Note: If this Benartex pattern is included in a kit, any questions about the kit should be addressed to the vendor from whom you bought it.

Share your finished quilt with the Benartex Community
on social media by tagging **#benartex** or **#benartexfabrics**



Also visit our Sewing Group on Facebook,
Create Inspire Delight

1"
square
measurement
for printing



Piece the bib pattern piece together along this line.

Fold fabric along line.

1"
square
measurement
for printing