

free pattern

Benartex

TRADITIONS


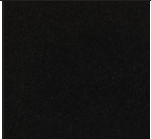
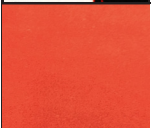
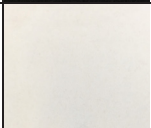
BERNINA SUPERIOR FLEECE



BERNINA Fleece Lap Quilt

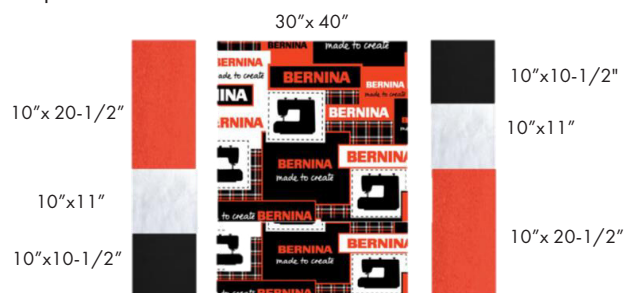
by Mariell Lantigua
(42" x 51" • Fringe 4" all around)

CUTTING INSTRUCTIONS

	BERNINA Logo Fleece Print 7735FL-99 Multi 1-1/4 YD Fussy cut to: 30" x 40"		Solid Fleece 7764FL-12 Red 3/4 YD (2) 10-1/2" x 24-1/2" (2) 10" x 10-1/2"
	Solid Fleece 7764FL-10 Red 3/4 YD (2) 10" x 24-1/2" (2) 10" x 20-1/2"		Solid Fleece 7764FL-09 White 1/3 YD (2) 10" x 11"
Backing 1-3/4 YD of one of the skus above. Sample used 7764FL-10 RED			

ASSEMBLY (Use 1/2" seam allowance):

1. Start by sewing the two side borders and then attach them to the main print.



2. Then sew together the top and bottom borders.



3. Attach the top and bottom borders to rest of the quilt.



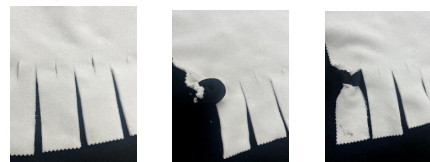
4. Once the front is assembled, you can personalize it with embroidery. This is optional.



5. Place the top quilt on top of the backing and trim to match exactly the top. Once you have both together cut a 4" square from each corner.



6. Cut all around, top and bottom fabrics together, 1-1/2" x 4" strips, and cut a 1/2" to 1" slit in the center of each strip. Pass ends of strips (both fabrics) through slit and pull.



Note: If this Benartex pattern is included in a kit, any questions about the kit should be addressed to the vendor from whom you bought it.

Share your finished quilt with the Benartex Community on social media by tagging **#benartex** or **#benartexfabrics**



Also visit our Sewing Group on Facebook,
Create Inspire Delight