

Benartex ARTISTRY

A BEAUTIFUL LIFE BY KELLY RAE ROBERTS

free pattern

Portrait of a Lady

Kit Available #BEALIFKT









Quilt
MODEL
AVAILABLE!
#BEALIFMD



Free pattern designed by Lisa Swenson Ruble • Finished Size: 50" x 69" • Available March/April 2023 at Benartex.com

CUTTING INSTRUCTIONS

*WOF = Width of fabric | LOF = Length of fabric | *Sew strips via short ends, then subcut as indicated in pattern*

	A BEAUTIFUL A LIFE PANEL 16017-99 <i>Multi</i>	1 Panel	Trim to measure 23-1/2" x 42-1/2"		WORD MEDALLION 16023-08 <i>Grey</i>	1/4 YD	(3) 2" X WOF strips*
	A BEAUTIFUL B LIFE FLORAL 16019-99 <i>Multi</i>	1/2 YD	(3) 4-1/2" X WOF strips*		TRULY F DAMASK 16024-84 <i>Teal</i>	7/8 YD	(3) 5" X WOF strips* (4) 3" X WOF strips*
	GARDEN C FLORAL 16020-21 <i>Rose</i>	3/8 YD	(3) 3" X WOF strips*		ROSE G BROCADE 16025-33 <i>Yellow</i>	1/4 YD	(3) 2" X WOF strips*
	CHEVRON D STRIPE 16022-84 <i>Teal</i>	1 YD	(3) 5-1/2" X WOF strips*, BORDER (7) 2-1/4" X WOF strips, BINDING		Basketweave H 16026-46 <i>Jade</i>	1/2 YD	(3) 3-1/2" X WOF strips*

BORDER ASSEMBLY: *Measure width and length of quilt top to ensure border cutting sizes. Below are our measurements.*

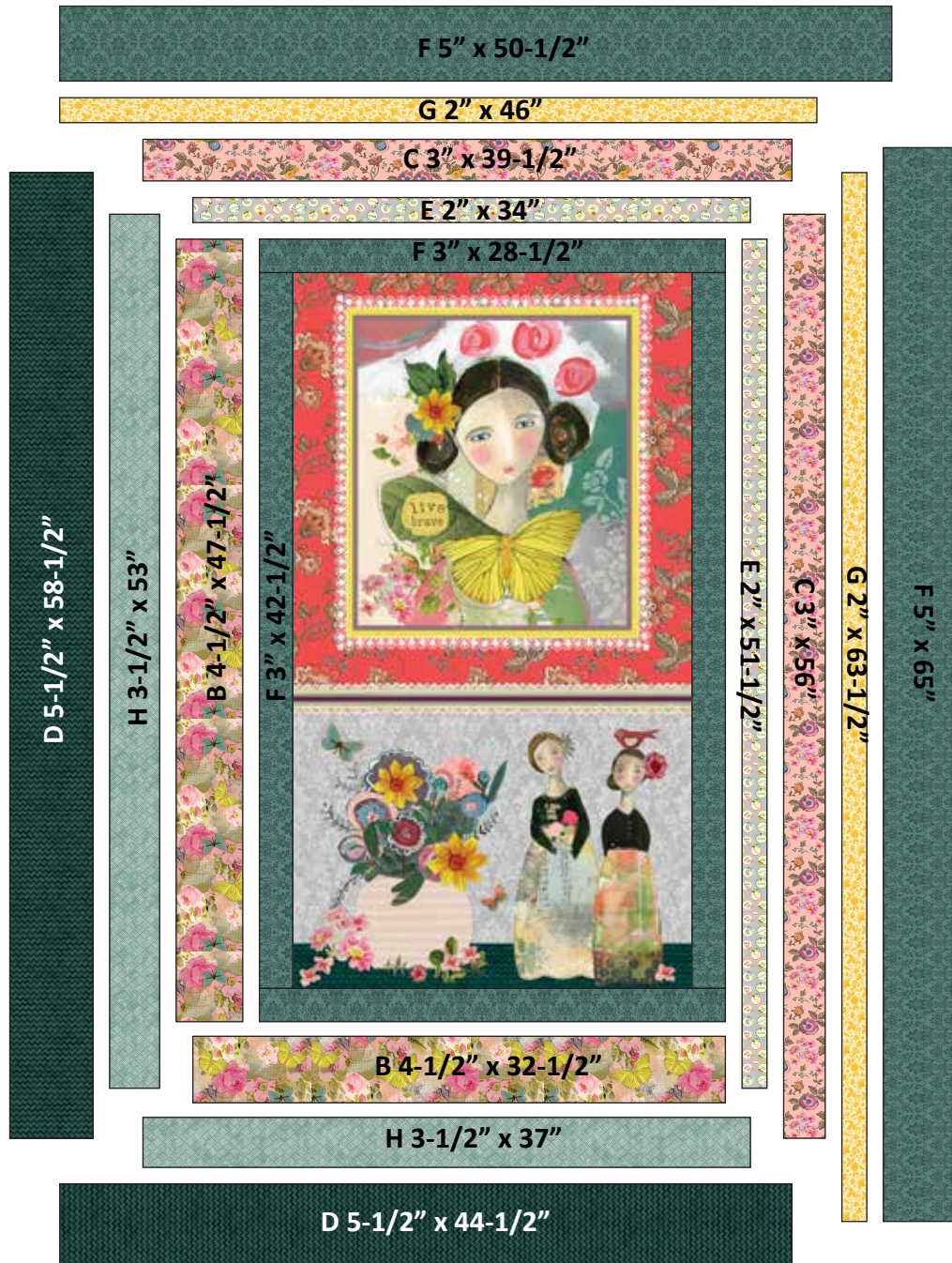
*Refer to **QUILT DIAGRAM** for proper placement and rotation.*

- Sew (1) **F** 3" x 42-1/2" strip to the left and right sides of **A** 23-1/2" x 42-1/2" panel. Sew (1) **F** 3" x 28-1/2" strip to the top and bottom.
- Sew (1) **B** 4-1/2" x (47-1/2") strip to the left side of the quilt center. Sew (1) **B** 4-1/2" x (32-1/2") strip to the bottom.
- Sew (1) **E** 2" x (51-1/2") strip to the right side. Sew (1) **E** 2" x (34") strip to the top.
- Sew (1) **H** 3-1/2" x (53") strip to the left side. Sew (1) **H** 3-1/2" x (37") strip to the bottom.
- Sew (1) **C** 3" x (56") strip to the right side. Sew (1) **C** 3" x (39-1/2") strip to the top.
- Sew (1) **D** 5-1/2" x (58-1/2") strip to the left side. Sew (1) **D** 5-1/2" x (44-1/2") strip to the bottom.
- Sew (1) **G** 2" x (63-1/2") strip to the right side. Sew (1) **G** 2" x (46") strip to the top.
- Sew (1) **F** 5" x (65") strip to the right side. Sew (1) **F** 5" x (50-1/2") strip to the top.

FINISHING:

Cut batting and backing 3" larger than top on all sides. Layer backing, batting and top together and baste or pin. When quilting is completed, trim excess batting and backing. Bind with D fabric.

Portrait of a Lady
 QUILT DIAGRAM
 SIZE: 50" X 69"



Note: If this Benartex pattern is included in a kit, any questions about the kit should be addressed to the vendor from whom you bought it.

Share your finished quilt with the Benartex community
 on social media by tagging **#benartex_fabrics**

