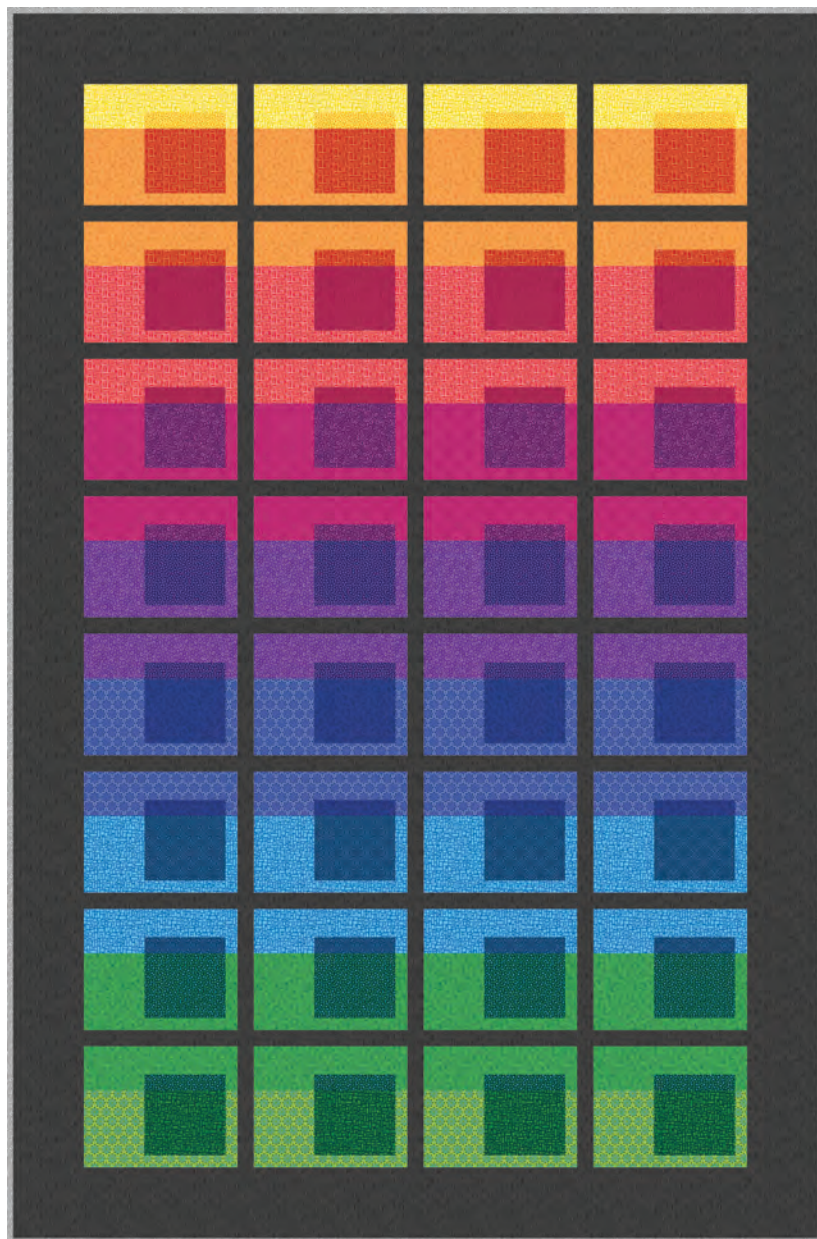


Frame of Mind

50"×76" napping quilt

featuring
TRANSPARENCY



Frame of Mind features Modern Quilt Studio's Transparency fabric line for Benartex Fabrics.

MATERIALS

Blocks

$\frac{1}{8}$ yd 17026-30 Cobblestone Gold

$\frac{1}{4}$ yd or 1 Fat Quarter each: 17020-42 Daisy Citrus, 17020-58 Daisy Periwinkle, 17021-66 Beads Lavender, 17021-68 Beads Magenta, 17022-26 Medallion Rose, 17022-50 Medallion Blue, 17023-10 Fence Red, 17023-27 Fence Rhubarb, 17024-37 Lantern Pumpkin, 17024-40 Lantern Green, 17024-54 Lantern Indigo, 17025-86 Linework Berry, 17026-48 Cobblestone Jade, 17026-69 Cobblestone Midnight, 17027-33 Pathway Lemon, 17027-46 Pathway Emerald, 17027-57 Pathway Sky

Top, Sides and Sashing

$1\frac{1}{2}$ yds 17025-91 Linework Black/White

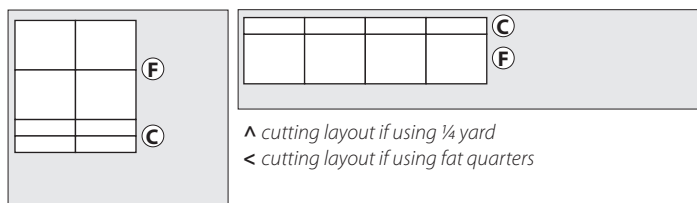
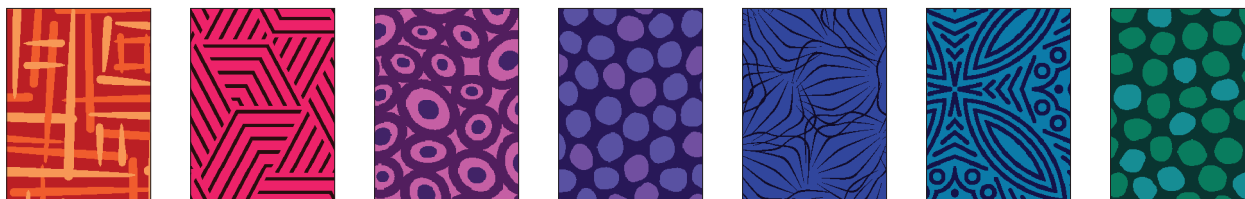
Binding

$\frac{3}{4}$ yd 17021-08 Beads Gray

Backing

$3\frac{1}{2}$ yards 17022-12 Medallion Charcoal

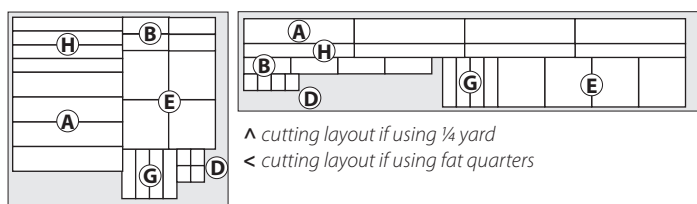
Batting 55"×81"



From each of these 7 darker prints, cut:

4— $5\frac{1}{2}$ " \times 4 $\frac{1}{2}$ " **F** pieces

4— $5\frac{1}{2}$ " \times 1 $\frac{1}{2}$ " **C** pieces



From each of these 7 lighter prints, cut:

4—10" \times 2 $\frac{1}{4}$ " **A** pieces

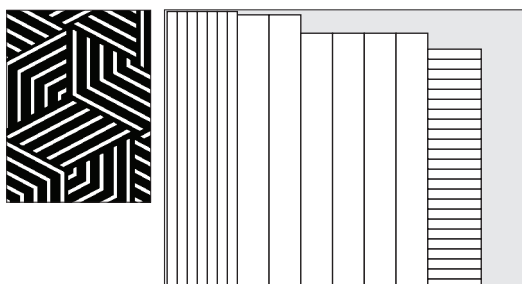
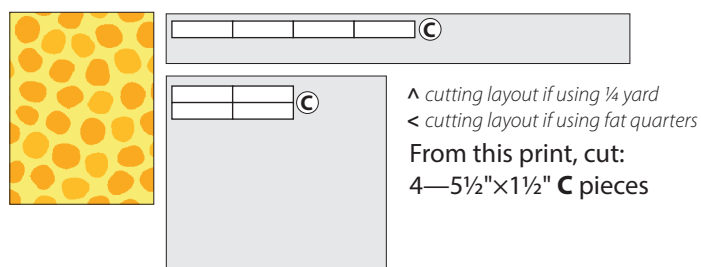
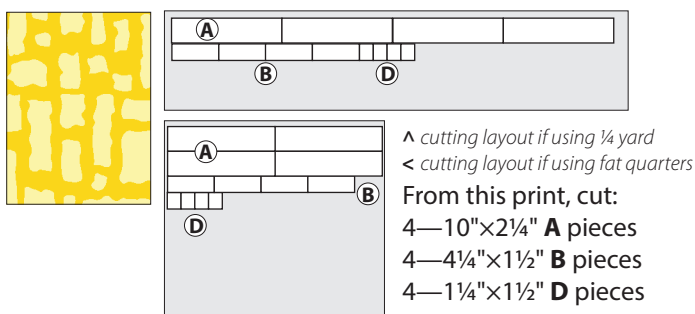
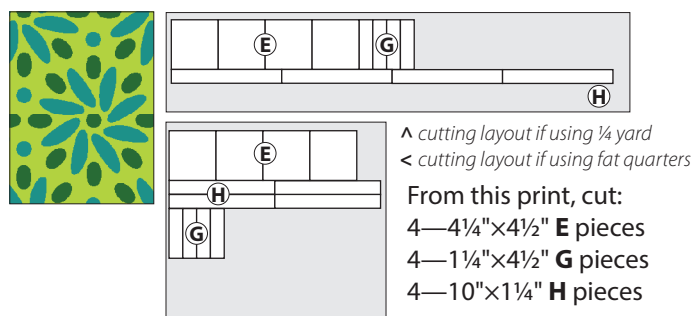
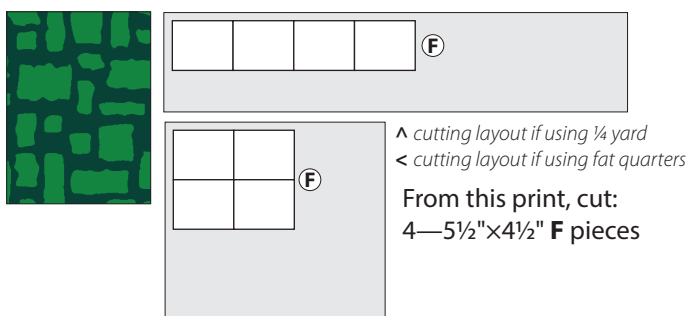
4—4 $\frac{1}{4}$ " \times 1 $\frac{1}{2}$ " **B** pieces

4—1 $\frac{1}{4}$ " \times 1 $\frac{1}{2}$ " **D** pieces

4—4 $\frac{1}{4}$ " \times 4 $\frac{1}{2}$ " **E** pieces

4—1 $\frac{1}{4}$ " \times 4 $\frac{1}{2}$ " **G** pieces

4—10" \times 1 $\frac{1}{4}$ " **H** pieces



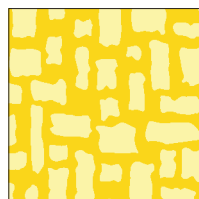
From $1\frac{1}{2}$ yards of field fabric, cut:

24—1 $\frac{1}{2}$ " \times 8" vertical sashing strips

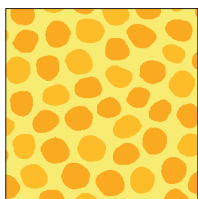
7—4 $\frac{1}{2}$ " \times 1 $\frac{1}{2}$ " horizontal sashing strips

2—4 $\frac{1}{2}$ " \times 5" pieces for top and bottom

4—3 $\frac{1}{2}$ " \times 5" pieces for sides



A, B, D



C

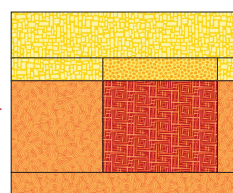
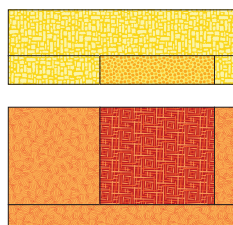
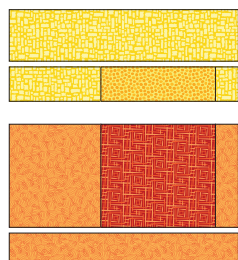
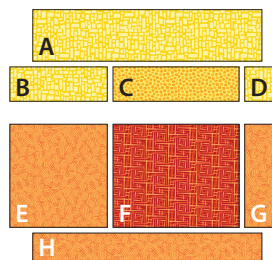


E, G, H



F

Fabrics used in Row 1



Sew 4 blocks as shown.

×4



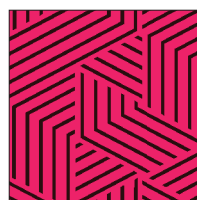
A, B, D



C

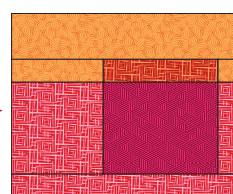
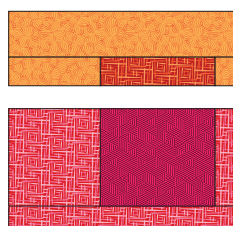
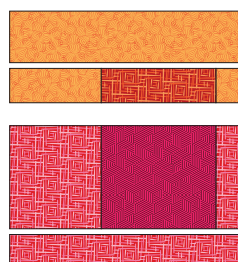
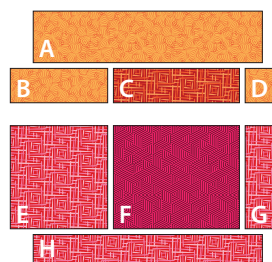


E, G, H



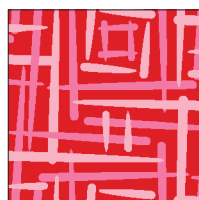
F

Fabrics used in Row 2

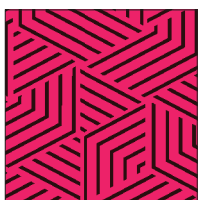


Sew 4 blocks as shown.

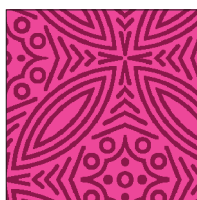
×4



A, B, D



C

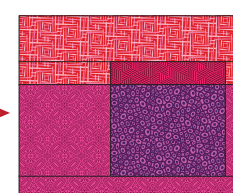
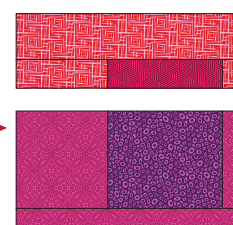
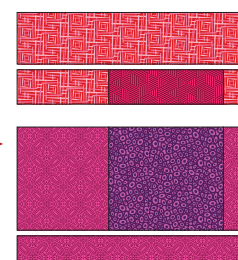
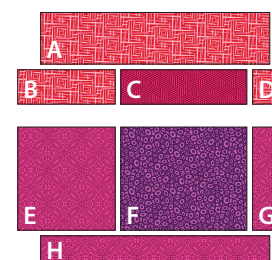


E, G, H



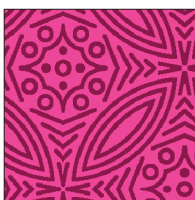
F

Fabrics used in Row 3



Sew 4 blocks as shown.

×4



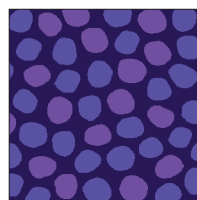
A, B, D



C

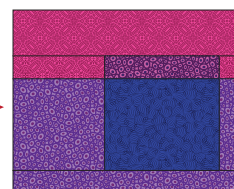
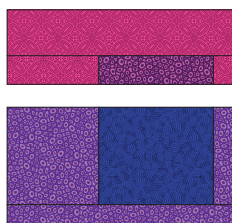
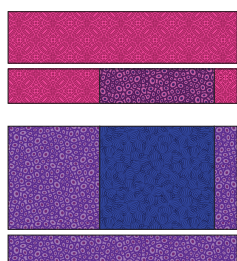
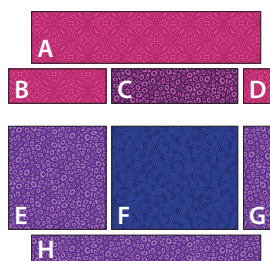


E, G, H



F

Fabrics used in
Row 4

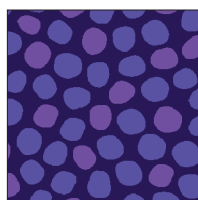


Sew 4 blocks as shown.

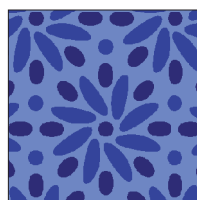
×4



A, B, D



C

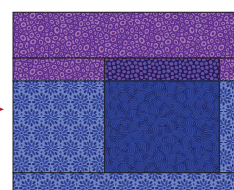
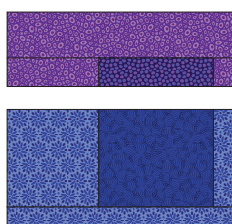
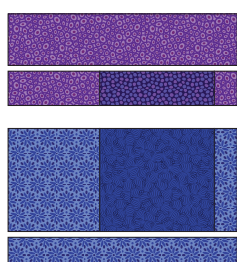
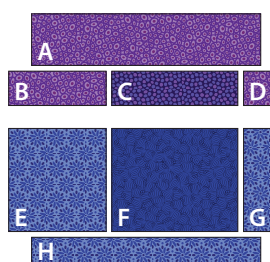


E, G, H



F

Fabrics used in
Row 5



Sew 4 blocks as shown.

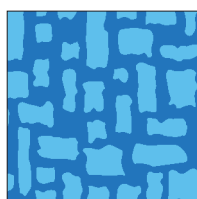
×4



A, B, D



C

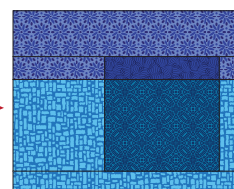
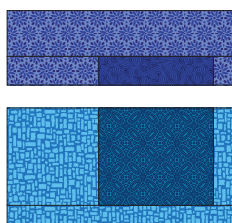
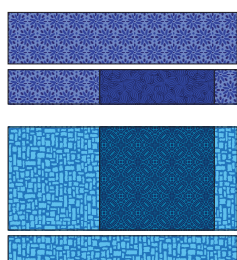
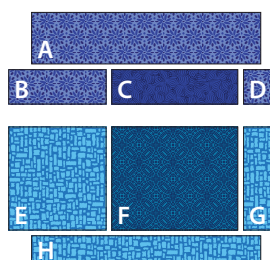


E, G, H



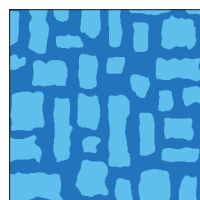
F

Fabrics used in
Row 6



Sew 4 blocks as shown.

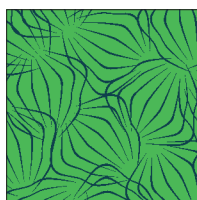
×4



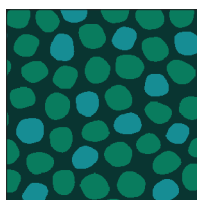
A, B, D



C

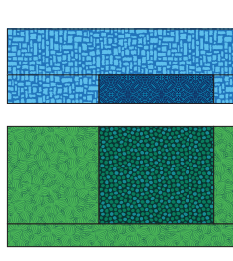
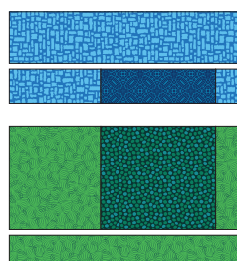
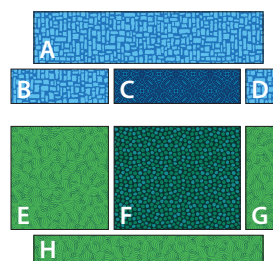


E, G, H

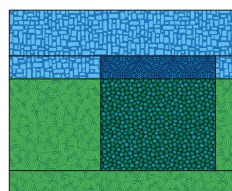


F

Fabrics used in
Row 7



Sew 4 blocks as shown.



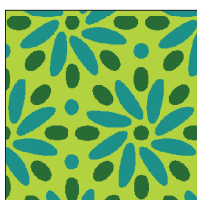
×4



A, B, D



C

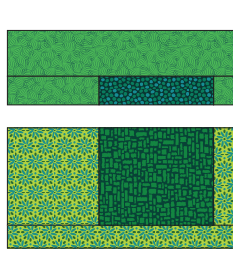
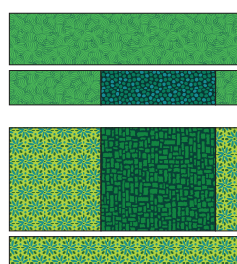
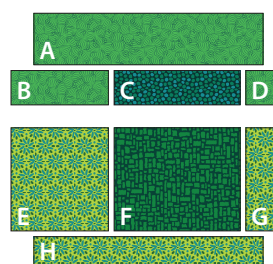


E, G, H

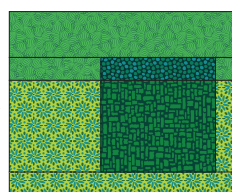


F

Fabrics used in
Row 8



Sew 4 blocks as shown.

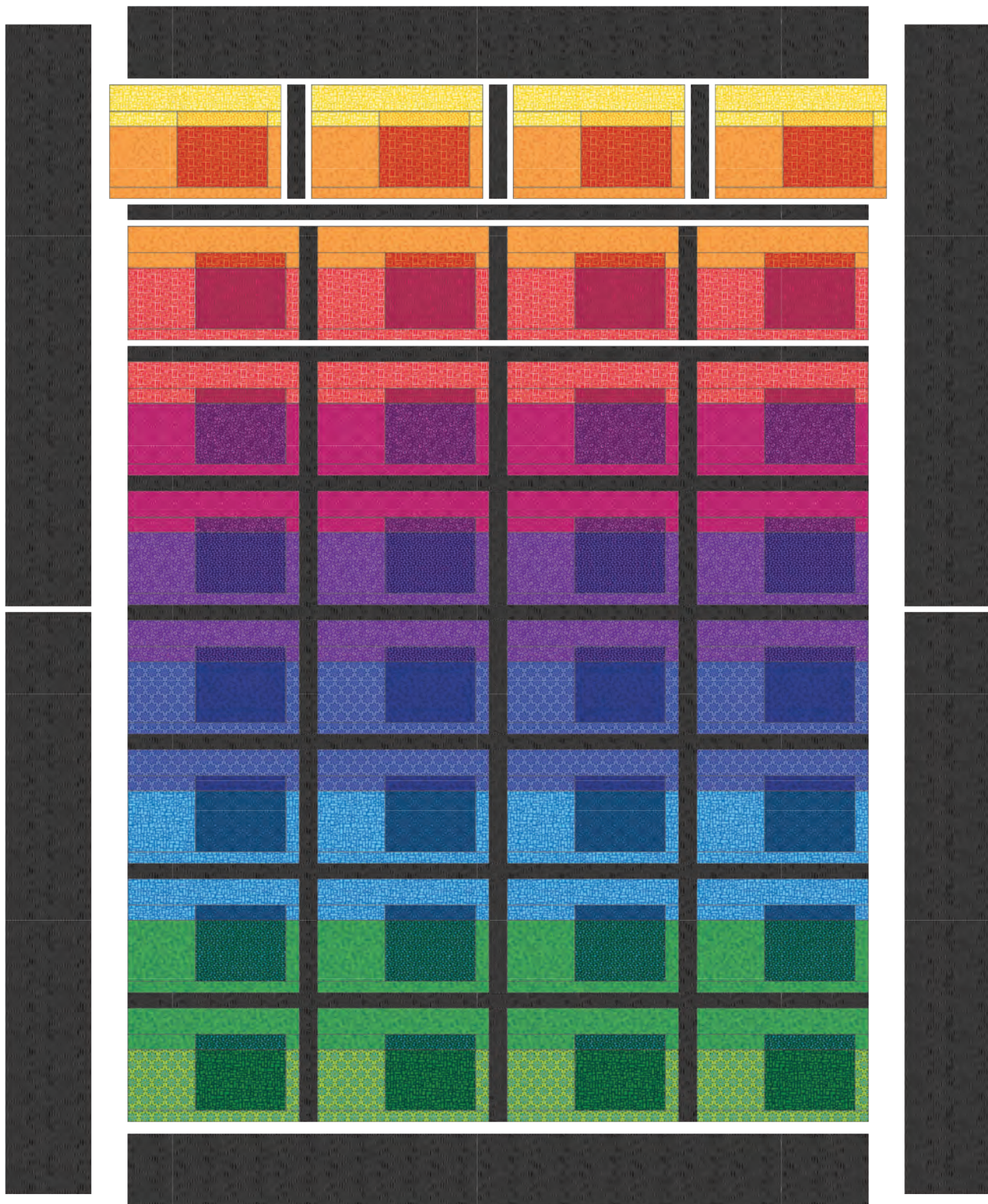


×4

Following the assembly diagram on the next page,

1. Assemble blocks and vertical sashing strips into 8 rows.
2. Sew top, rows, horizontal sashing strips and bottom together.
3. Sew sides together, then sew to pieced center unit.

1. Layer pieced top, batting and backing.
2. Baste, then quilt.
3. Finish with your preferred binding method. Visit the Modern Quilt Studio YouTube channel to learn our quick and easy one-step binding method.



assembly diagram