

free pattern

Benartex

CONTEMPO

MEOWY CHRISTMAS BY TERRY RUNYAN



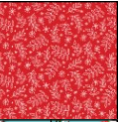

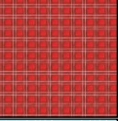


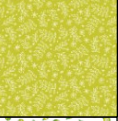

Apron and Oven Mitt

Finished size: Various
Free pattern designed by Brianna Roberts

CUTTING INSTRUCTIONS

WOF = Width of fabric
Additional Supplies Needed: 1/4 YD Insul-Bright

APRON

	HOLIDAY JINGLE A 16235-10 Red	3/8 YD	(3) 3" x WOF strips, subcut (2) 3" x 20" for neck ties, trim (2) strips to desired waist tie length (30" - 40") TIES
	CAT IN A SWEATER TOSS B 16236-84 Turquoise	1 YD	(1) 25" x 32" rectangle BODY
	PAINTED PLAID C 16237-10 Red	1/4 YD	Cut (2) each Upper and Lower Pocket pieces using templates POCKETS
	SNOW DOTS D 16239-80 Light Turquoise	1/4 YD	(1) 6" x WOF strip RUFFLE
OVEN MITT			
	CATS IN HATS E 16233-44 Lime	1 FQ	Cut (2) Oven Mitt pieces using templates EXTERIOR
	HOLIDAY JINGLE F 16235-44 Lime	1/8 YD	(1) 3" x WOF strip RUFFLE
	FA LA LA ORNAMENTS G 16238-43 Green/White	1 FQ	Cut (2) Oven Mitt pieces using templates INTERIOR

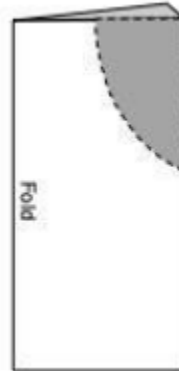
APRON ASSEMBLY: *Refer to APRON DIAGRAMS*

APRON DIAGRAMS

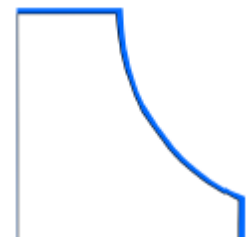
Forming the Apron:

1. Fold B rectangle vertically with right sides together to form a 12-1/2" x 32" rectangle.
2. Place Apron Pattern Piece onto folded B rectangle, matching top and right side of pattern piece with raw edges and cut along the curved edge.
3. Unfold the apron and lay flat. Turn it over to the wrong side of the fabric.
4. Fold in all edges of the apron 3/8" (wrong sides together) and press. Repeat to cover all raw edges and press again.

1-2.



4.



APRON ASSEMBLY (continued):

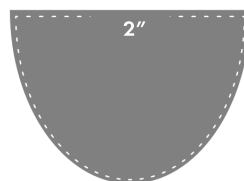
Refer to **APRON DIAGRAMS**

APRON DIAGRAMS

Forming the Pockets

5. Place (2) C **Upper Pocket** pieces right sides together and sew around the perimeter (1/4" seam allowance, leaving a 2" opening in the top. Trim corners, turn right side out and press.
6. Repeat step 5 with (2) C **Lower Pocket** pieces.
7. Place the **Upper Pocket** centered on the upper portion of the apron and 2" down from the top. Pin in place, then topstitch 1/8" seam allowance along the curved edge leaving top open.
8. Repeat with **Lower Pocket**. Placing 3" below waist ties.

5-6.



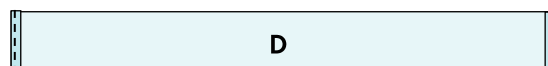
7-8.



Forming the Ruffle

9. Fold in the short ends of D 3" x WOF strip 1/4" each with wrong sides together and press. Topstitch along each edge to finish.
10. Fold D strip lengthwise in half with the wrong sides together. Change the bobbin thread to a contrasting color. Pull the upper and lower thread out about 6" from the machine. Do not backstitch when starting. Using a gathering stitch (Basting stitch), sew along the raw edge side lengthwise about 1/4" seam allowance or less. Pull a long tail of the upper and lower threads about 6" and cut.
11. Pull the contrasting thread gently to gather it to make the ruffles. Pull it so that it measures the same length as the bottom of the apron (25").

9.



10.



11.



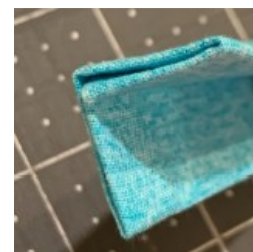
Forming the Apron Ties

12. Fold in one short end 1/2" of (1) A **Apron Tie** with wrong sides together and press.
13. Press and fold the ties in half lengthwise with wrong sides together. Open one pressed half and fold in half lengthwise again with raw edges meeting in the center. Fold again with the right sides of fabric facing each other and the raw edges enclosed inside and press again. The width of the binding/ties will be 3/4".
14. Topstitch with a 1/4" allowance from the edges of each tie.
15. Repeat steps 12-14 with all apron ties.

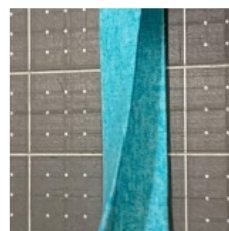
12.



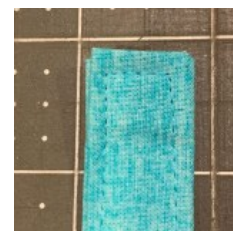
13a.



13b.



14.



APRON ASSEMBLY (continued):

Refer to APRON DIAGRAMS

Finishing Apron

16. Locate the top of the apron. Place the raw edge of both neck ties near the top left and right corner of the apron.
17. Insert the raw edge of the tie underneath the folded edge of the apron. Repeat with the second tie. Pin or clip in place.
18. Repeat steps 16 and 17 for the waist ties. Insert each waist tie at the bottom left and right edge of the apron where the curved edge ends. Pin or clip in place.
19. As in previous steps, insert the raw edge of the ruffle underneath the fold along the bottom of the apron. Pin or clip in place.
20. Sew the apron to the ties and ruffle using an edge stitch or 1/8" topstitch from the inside folded edge of the apron. Stitch around the perimeter of the apron enclosing the raw edge of the ties.
21. Take each tie and the ruffle and fold it over the back side of the folded edge of the apron. Press it. Tack in place by stitching across each tie along the outer folded edge of the apron..

APRON DIAGRAMS

16—18.



20.



21a.



21b.



OVEN MITT ASSEMBLY:

Refer to OVEN MITT DIAGRAMS

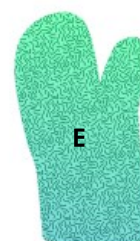
1. Baste the Insul-Bright to the wrong side of (2) E oven mitt exterior pieces. Quilt if desired.
2. Put the E oven mitt exterior pieces right sides together. Stitch 1/4" seam allowance along three sides of the oven mitt while leaving the bottom open. Don't forget to backstitch at the beginning and the end.
3. Repeat step 2 with the G interior pieces, leaving a 6" gap on the side of the lining to allow for turning it right side out.
4. Using F 3" x WOF strip, repeat steps 9-11 (Forming the Ruffle) from the apron for the ruffle for the oven mitt. Baste ruffle on around the exterior edge of the oven mitt.

OVEN MITT DIAGRAMS

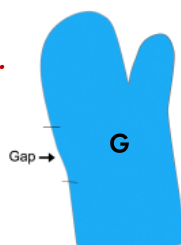
1.



2.



3.



4.



OVEN MITT ASSEMBLY (continued):

Refer to OVEN MITT DIAGRAMS

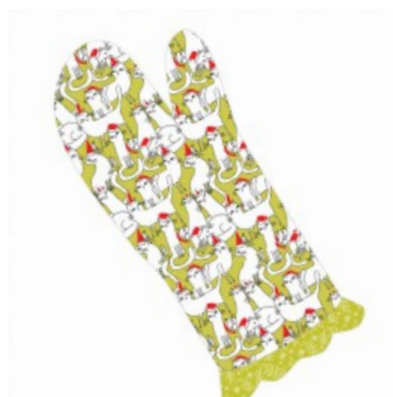
5. Turn the exterior of the oven mitt right side out. Place it inside of the interior. Both the interior and the exterior oven mitt are right sides together.
6. Align the two side seams and opening of the oven mitt with the exterior and interior. Be sure to keep the ruffle inside. Pin or clip in place.
7. Sew a 1/4" seam allowance around the opening of the oven mitt. Don't forget to backstitch at the beginning and end.
8. Turn the oven mitt right side out through the gap in interior pieces and press. Sew the opening closed with a slip stitch or machine stitch.
9. Take the interior and put it inside the exterior, press.
10. Press the top edge along the opening. Topstitch the opening edge with an 1/8" seam allowance.

OVEN MITT DIAGRAMS

6.



8.



Note: If this Benartex pattern is included in a kit, any questions about the kit should be addressed to the vendor from whom you bought it.

Share your finished quilt with the Benartex Community
on social media by tagging **#benartex** or **#benartexfabrics**

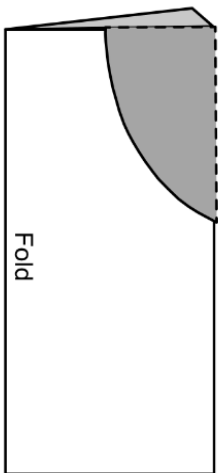


Also visit our Sewing Group on Facebook,
Create Inspire Delight

Sew Cute and Quirky

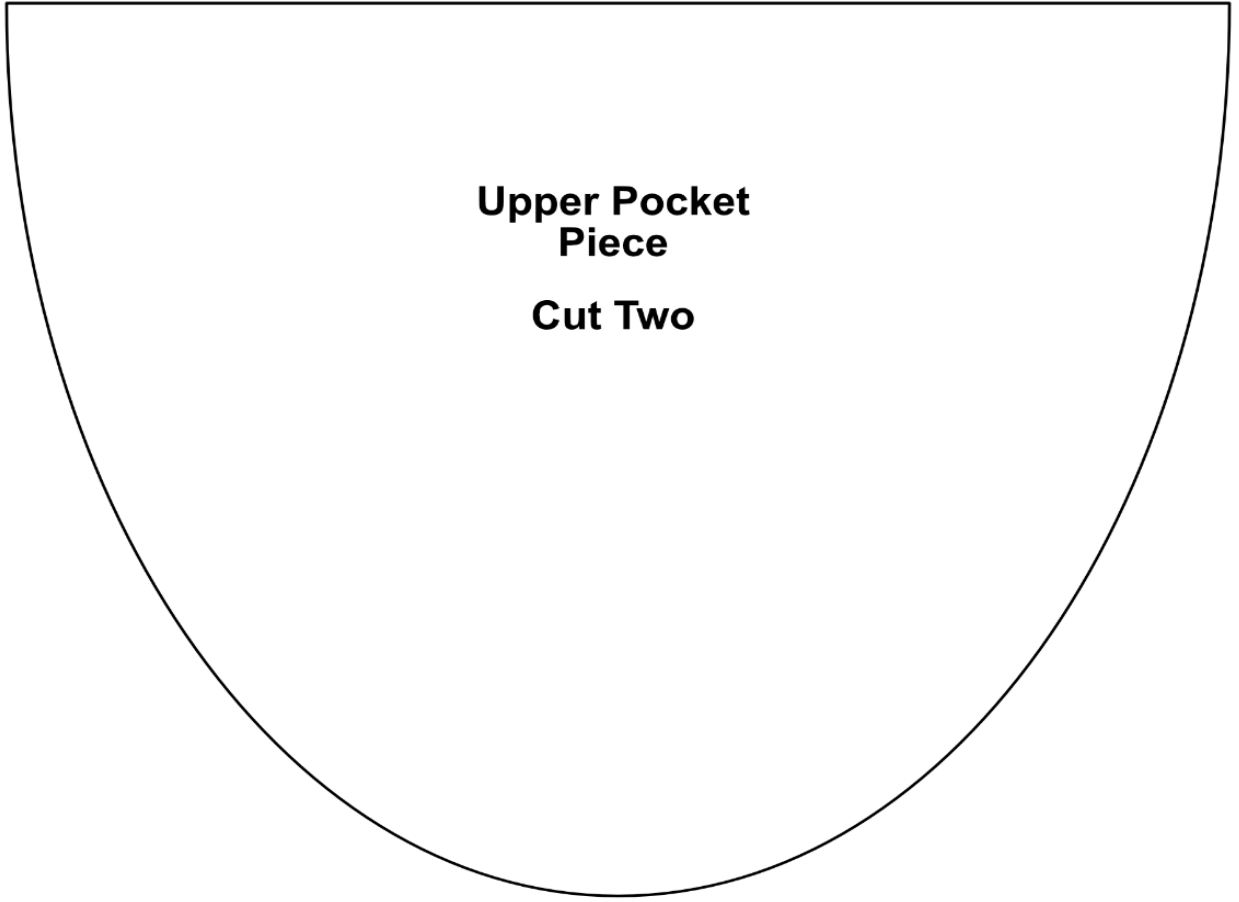
Apron Pattern Piece

Place along the vertical edge of the apron at the top
corner of the folded apron on the unfolded side.



**1"x1"
Test
Measurement
Square**

*This is not a pattern piece.
It is used to measure
accuracy for printing the pattern.



**Upper Pocket
Piece**
Cut Two



**Lower Pocket
Piece**
Cut Two

Oven Mitt Pattern Pieces (Piece together)



