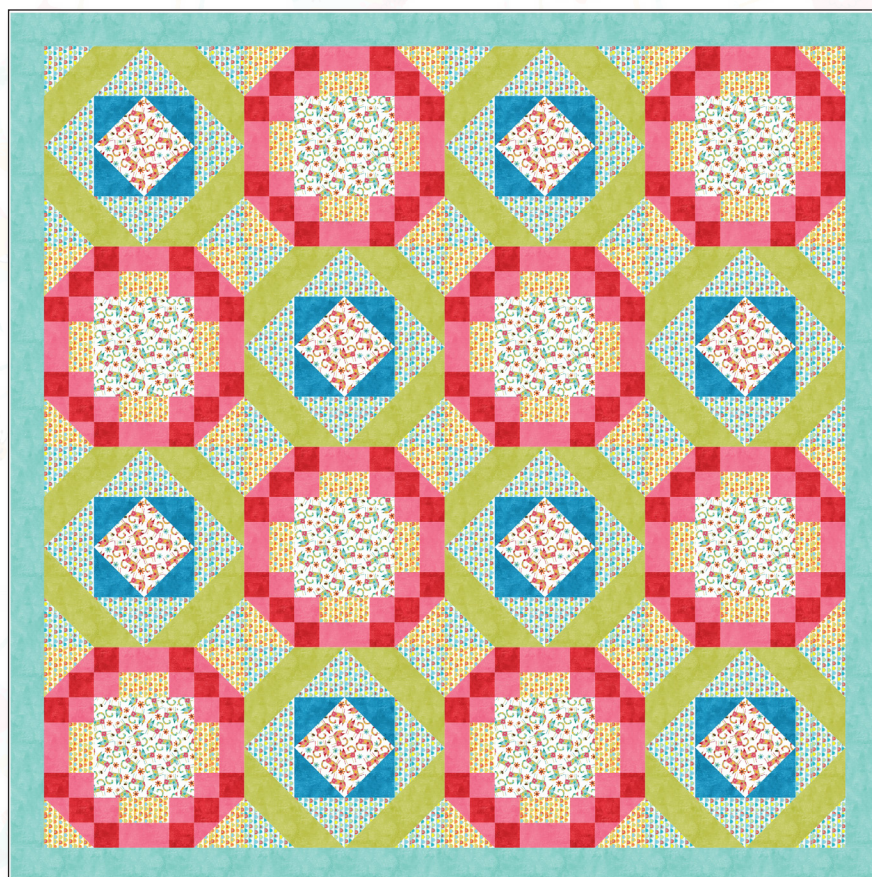


# Kitty's Ball of Yarn

by Kari Mathews (52" x 52")



Mix of traditional, strip and template techniques

Swatches	SKU	Yards 1 KIT	Yards (bolts) 12 KITS	Yards (bolts) 24 KITS
	16348-37	1/4 yd	3 (1)	6 (1)
	16348-85	1/2 yd	6 (1)	12 (1)
	16349-35	1/2 yd	6 (1)	12 (1)
	16349-85	3/4 yd	9 (1)	18 (2)
	9488-04	1/2 yd	6 (1)	12 (1)
	9488-10	3/4 yd	9 (1)	18 (2)
	9488-21	5/8 yd	7-1/2 (1)	15 (1)
	9488-40	5/8 yd	7-1/2 (1)	15 (1)
	9488-55	1/3 yd	4 (1)	8 (1)

See full kitting chart:



- This chart is a general guide for purchasing yardage and is not intended to be used for cutting kits.
  - Please visit [benartex.com](http://benartex.com) for the final tested pattern before cutting kits.
- The quilt shown is a digital representation. Actual fabric repeats may vary from design shown.